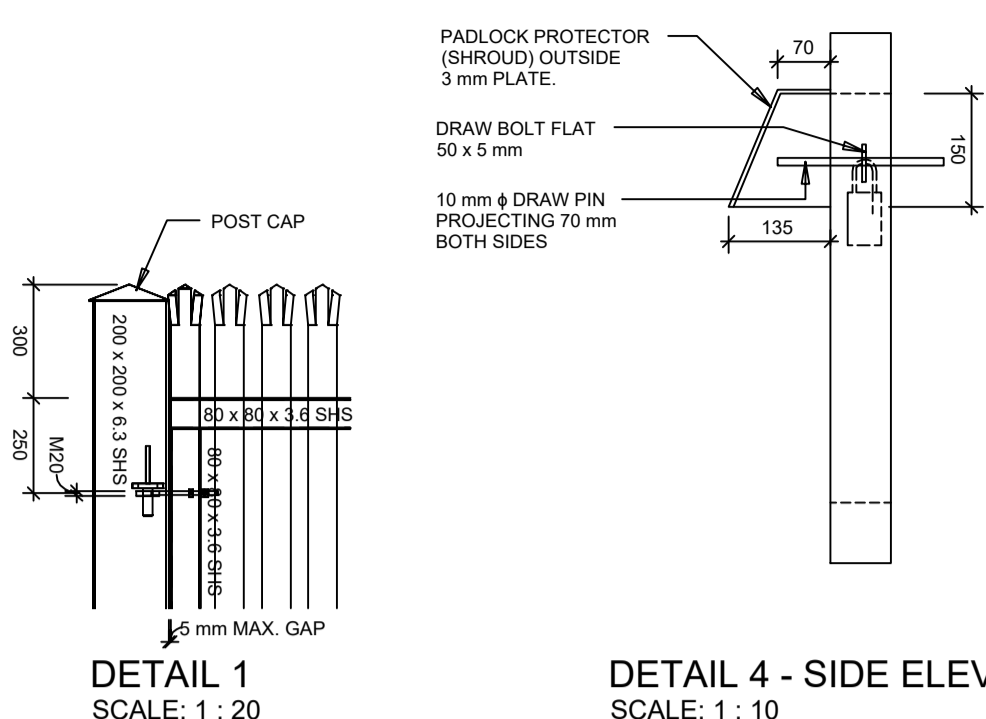
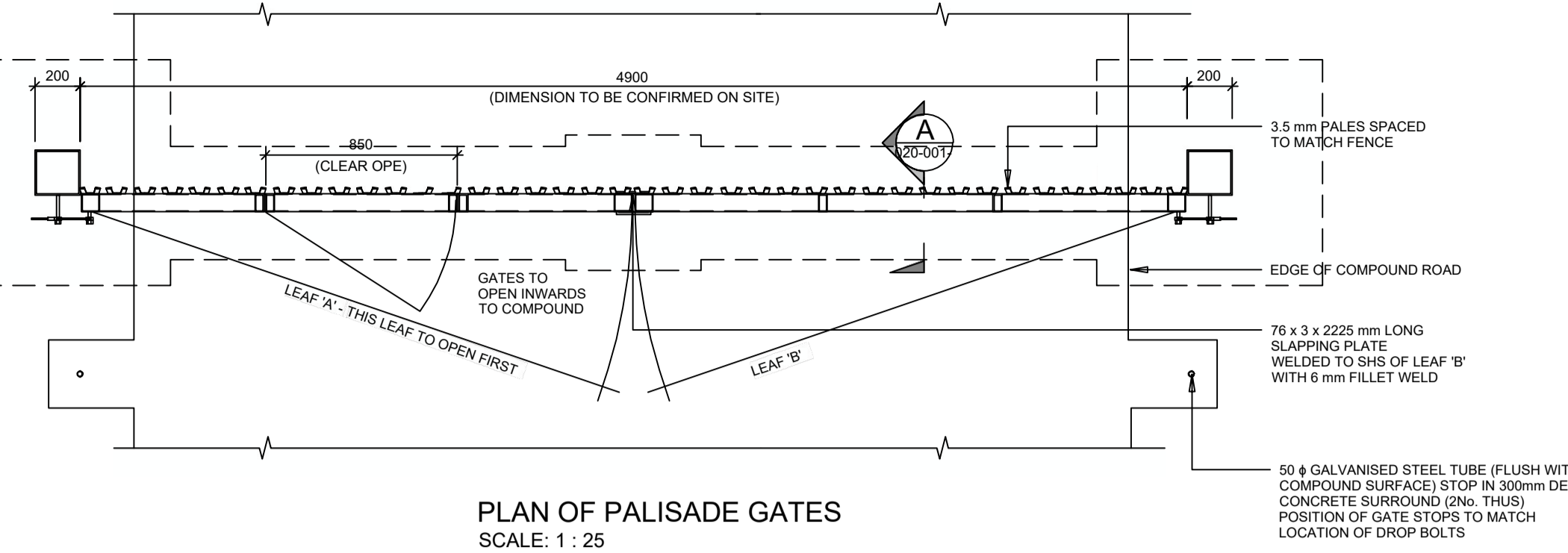
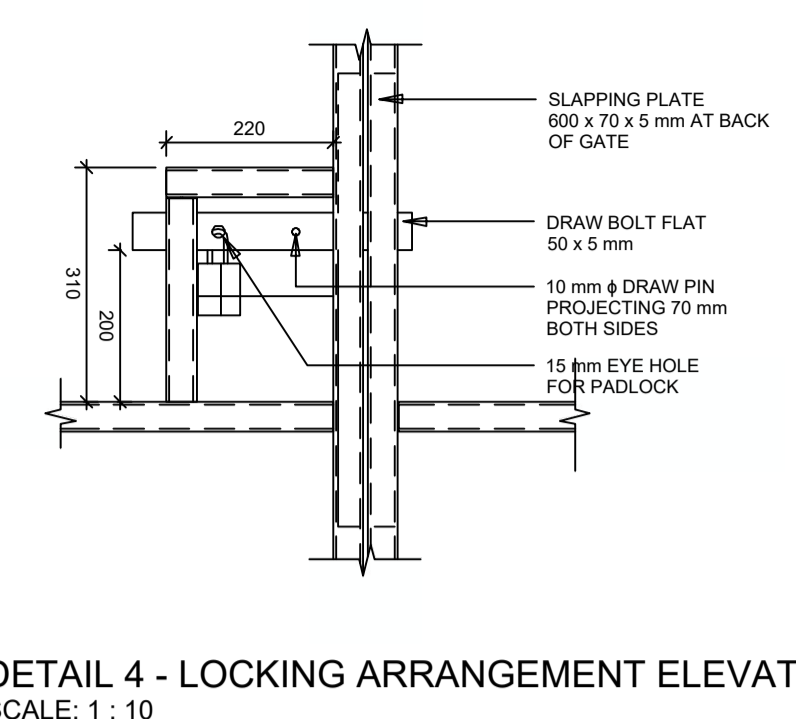


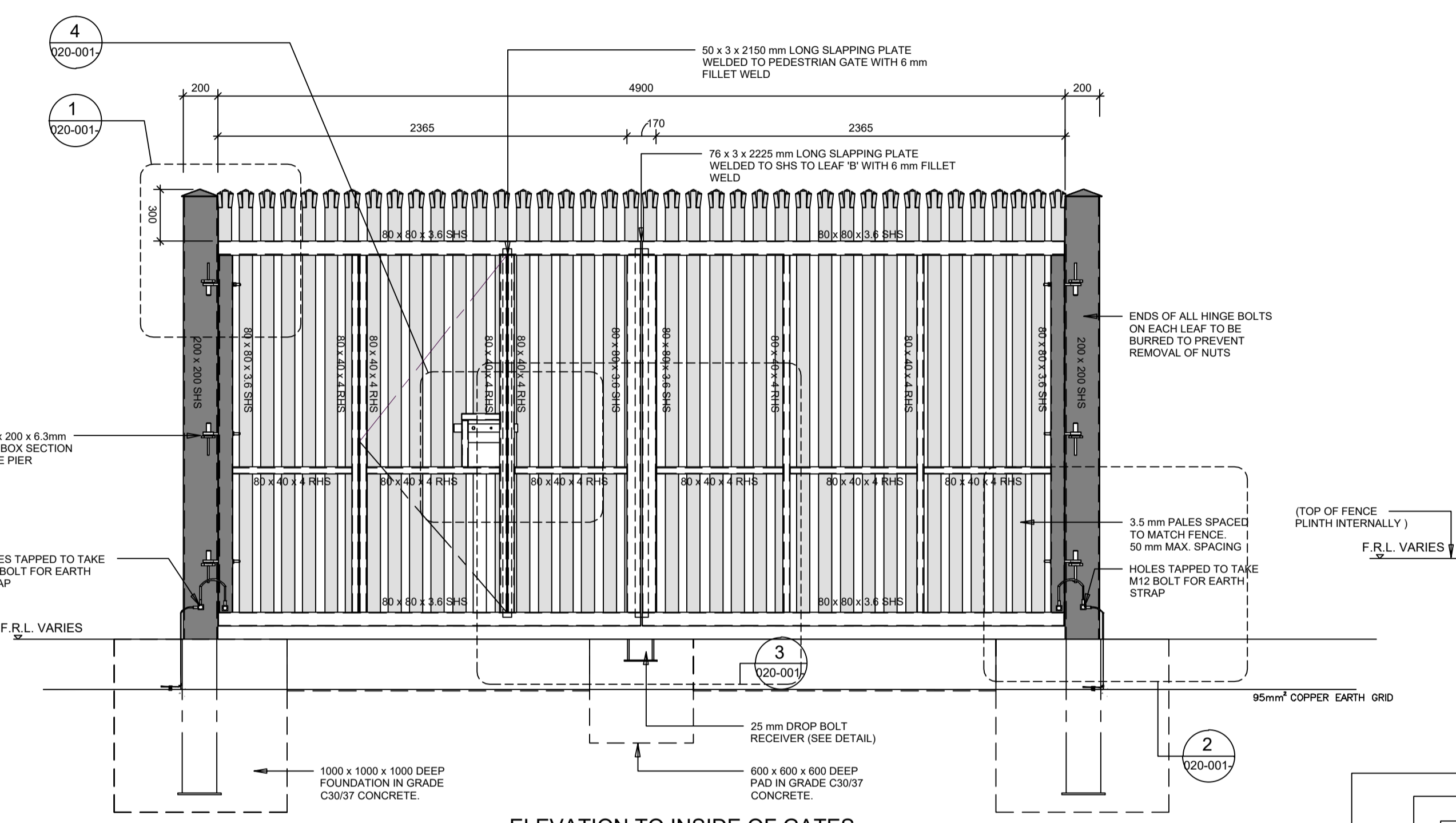
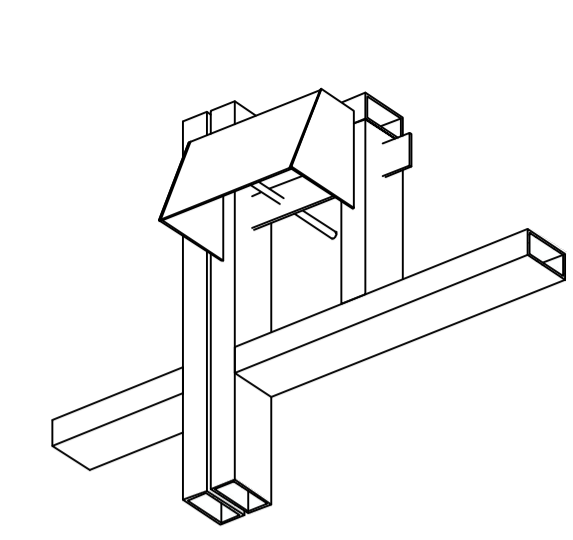
ESB GATE DRAWING DETAILS SUBJECT TO EIRGRID APPROVAL.
GATE COLOUR SUBJECT TO PLANNING AUTHORITY DECISION.



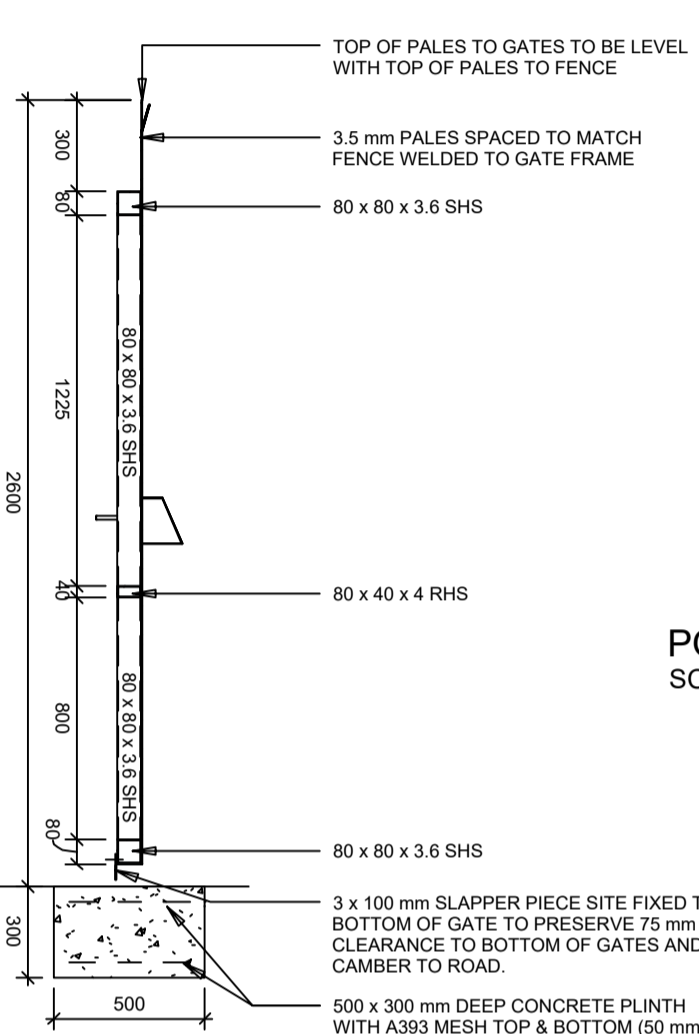
DETAIL 4 - SIDE ELEVATION
SCALE: 1 : 10



3D VIEW OF PADLOCK PROTECTOR
SCALE:

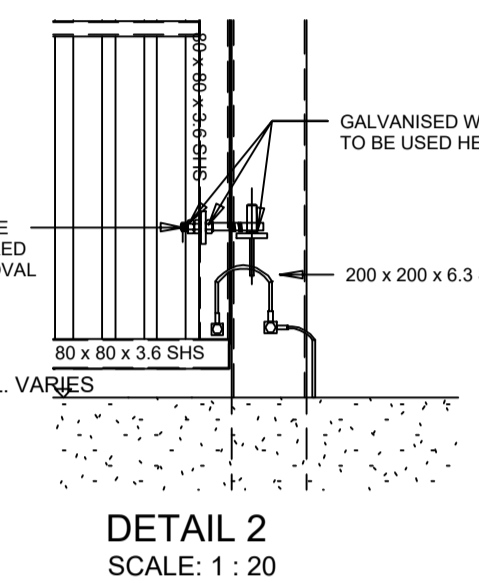
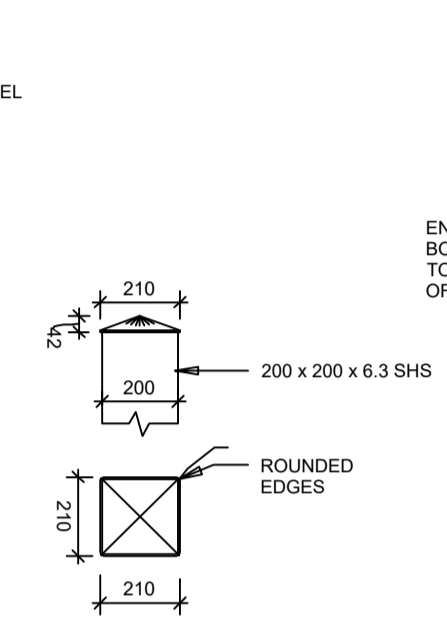


ELEVATION TO INSIDE OF GATES
SCALE: 1 : 25
(NOTE: A.) LOCKING ARRANGEMENT OMITTED FOR CLARITY. SEE DETAIL 2 & 4

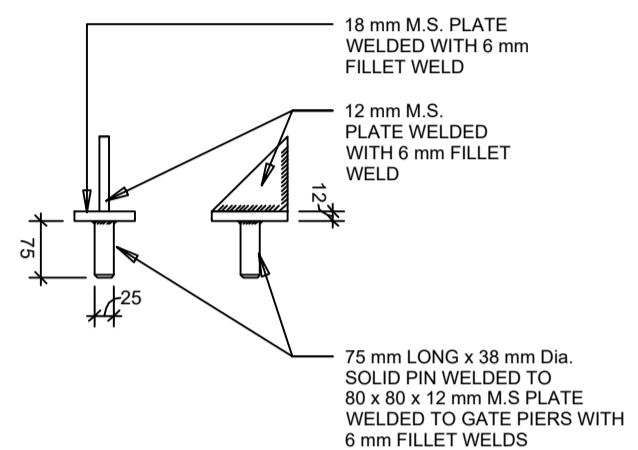


SECTION A-A
SCALE: 1 : 25

POST CAP DETAIL
SCALE: 1 : 20

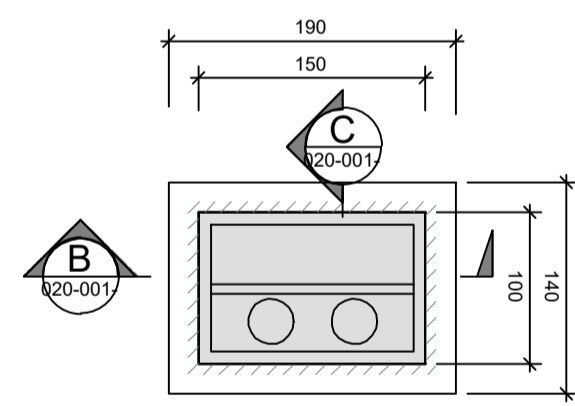


HINGE MOUNT DETAIL
SCALE: 1 : 10

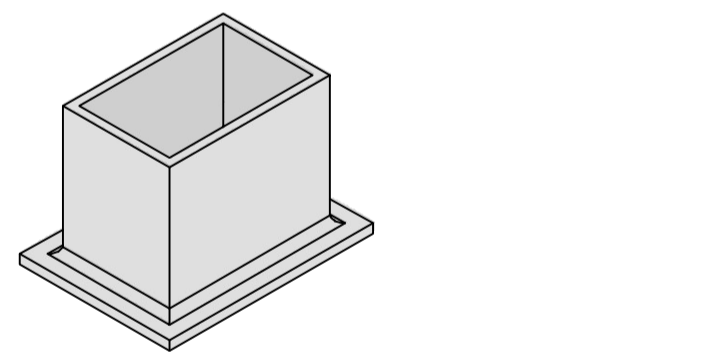


- NOTE:
- THIS DRAWING IS NOT TO BE SCALED.
 - GALVANISING TO BE IN ACCORDANCE WITH I.S. EN ISO 1461.
 - BLACK POWDER COATING TO BE IN ACCORDANCE WITH B.S. EN 13438. COLOUR TO ARCHITECTS DETAILS.
 - PALES TO BE TRIPLE POINTED & SPLAYED, AND WELDED TO RAILS IN ACCORDANCE WITH CL. 5.1 OF BS 1722-12.
 - GAP BETWEEN PALES AND BETWEEN PALES AND RSJ TO BE NOT GREATER THAN 50 mm.
 - MINIMUM HEIGHT OF GATES ON EITHER SIDE OF COMPOUND IS TO BE 2600 mm.
 - IN AREAS OF MADE-UP GROUND, ADDITIONAL CONCRETE TO BE USED IN BASE QUANTITY TO BE APPROVED BY THE ENGINEER IN ADVANCE.
 - CONCRETE TO BE GRADE C30/37.
 - THE GATE IS TO BE CONSTRUCTED IN ACCORDANCE WITH B.S. 1722 PART 12.
 - TOP OF PALES TO GATES TO BE LEVEL WITH TOP OF PALES TO FENCE.
 - WASHERS TO BE USED ON ALL NUTS.
 - POST SUPPORTS TO BE POSITIONED APPROPRIATELY AROUND THE SITE.
 - PALISADE FENCE TO BE EARTHED AT EVERY CORNER POST AND POST OF AT LEAST 10m INTERNAL IN BETWEEN.

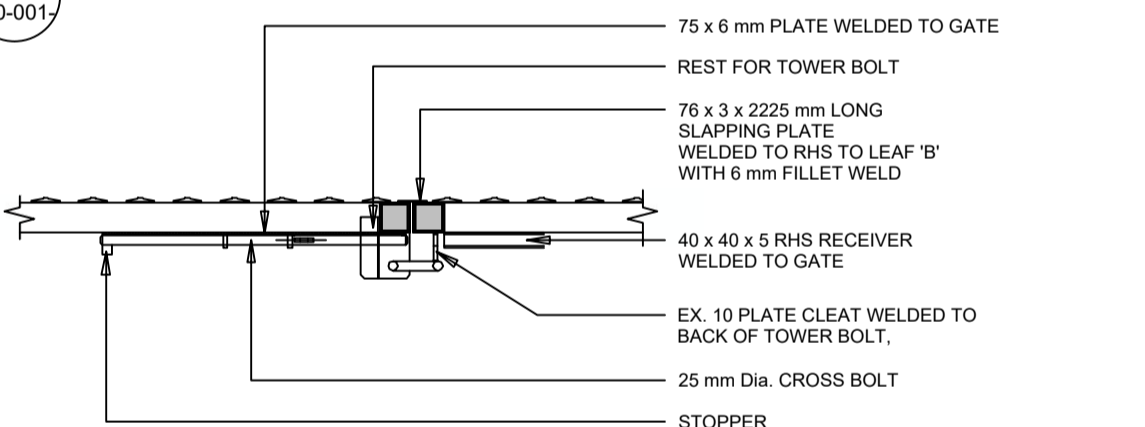
REFER TO DRAWING DUB062HV-CSE-00-XX-DR-C-2705 FOR FENCING LAYOUT



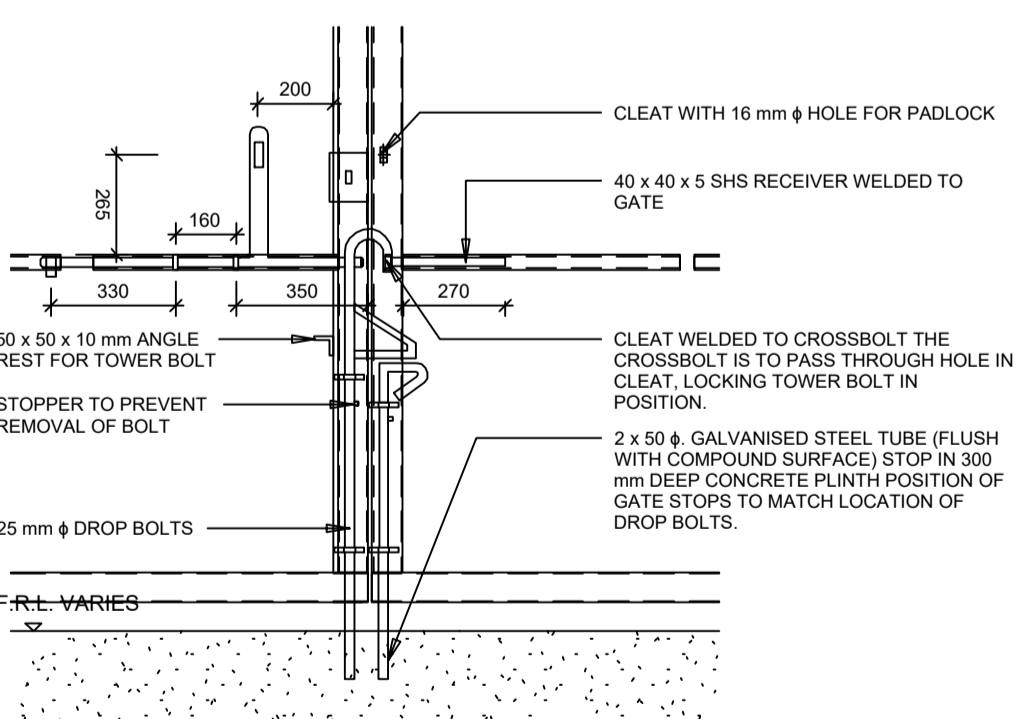
PLAN - BOLT RECEIVER
SCALE: 1 : 5



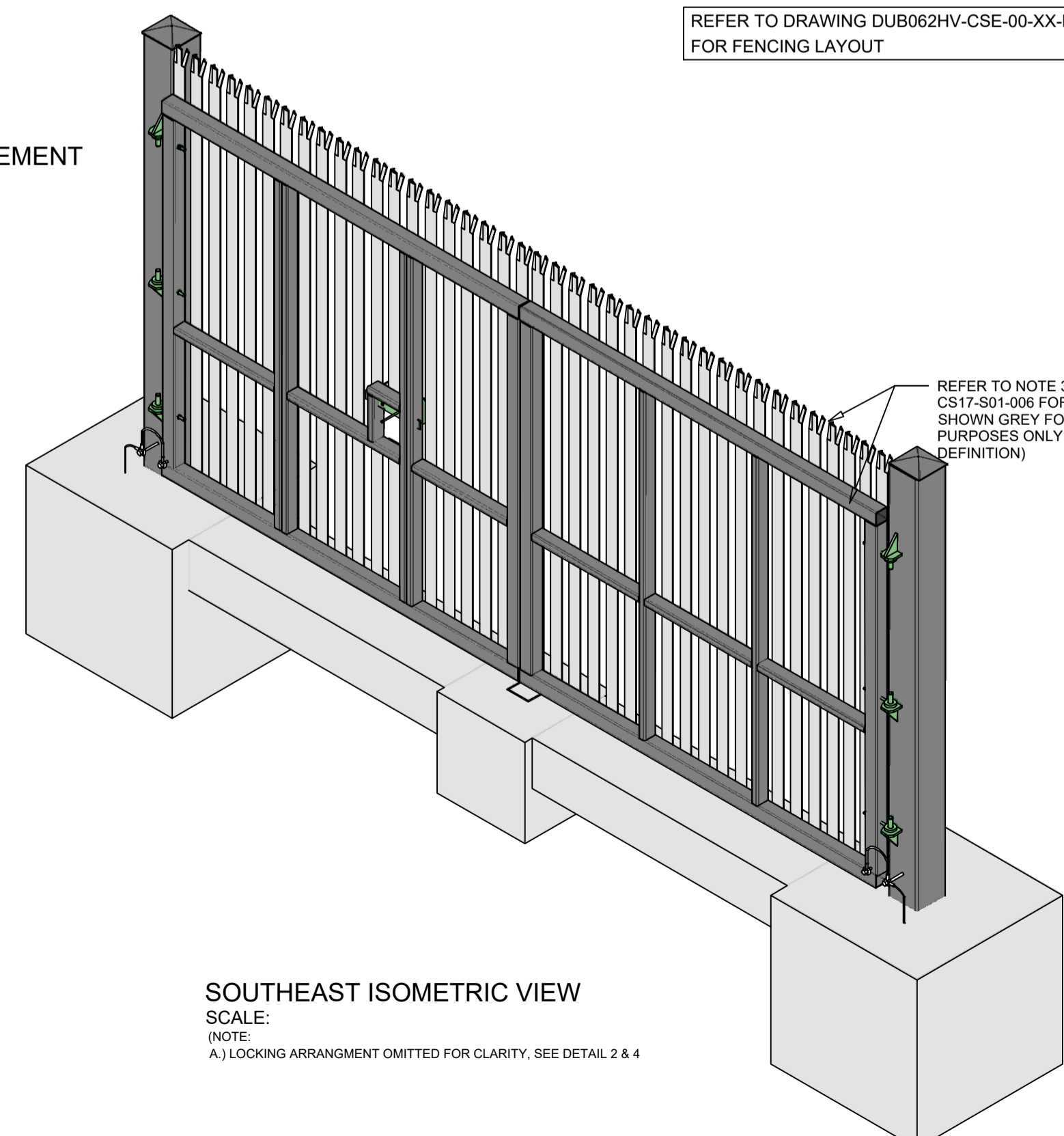
ISOMETRIC VIEW OF DROP BOLT RECEIVER
SCALE:



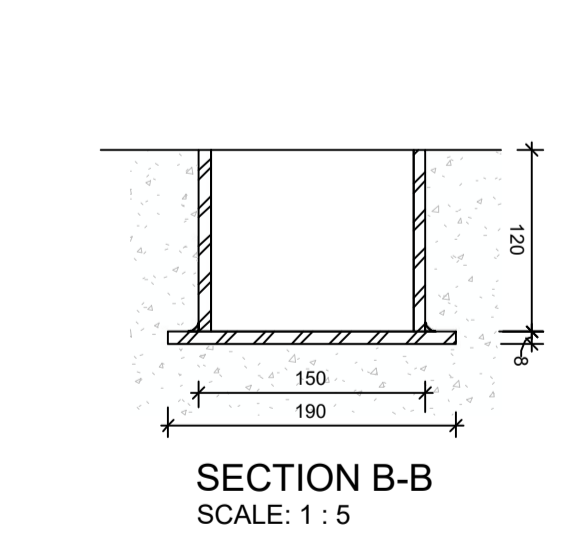
DETAIL 3 - PLAN VIEW SHOWING LOCKING ARRANGEMENT
SCALE: 1 : 20



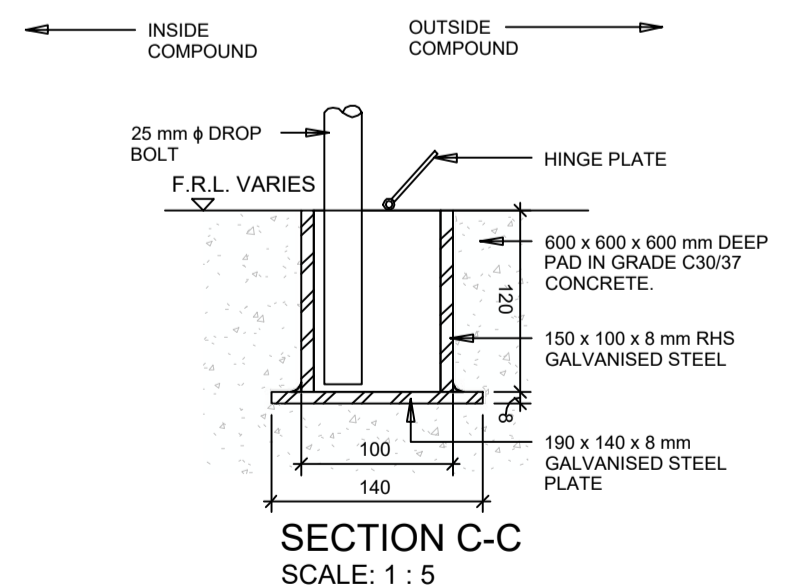
DETAIL 3 - ELEVATION SHOWING LOCKING ARRANGEMENT
SCALE: 1 : 20



SOUTHEAST ISOMETRIC VIEW
SCALE: 1 : 25
(NOTE: A.) LOCKING ARRANGEMENT OMITTED FOR CLARITY. SEE DETAIL 2 & 4



SECTION B-B
SCALE: 1 : 5



SECTION C-C
SCALE: 1 : 5

Rev	Description	Drawn	Checked	Date
P04	SID ISSUE	DM	PM	04.02.2022
P03	DRAFT SID ISSUE	DM	PM	10.12.2021
P02	SID SCHEME ISSUE	DM	PM	26.11.2021
P01	WIP	DM	PM	22.10.2021

Clifton Scannell Emerson Associates Limited
Consulting Engineers,
3rd Floor The Highline,
Bakers Point, Pottery Road,
Dun Laoghaire, Co. Dublin,
Ireland, A96 KW29

T: +353 1 288 5006
F: +353 1 283 3466
E: info@csea.ie
W: www.csea.ie

VANTAGE DATA CENTERS

Client: **KILCABERY 110KV SUBSTATION & MV CLIENT COMPOUND**

Project: **PROPOSED GATE DETAILS**

Dwg. Title: **SHEET 1**

Drawn By: **DM** Date: **OCT 2021** Scale: **AS INDICATED @ A1** Job No: **21_115**

Checked By: **PM** Scale: **AS INDICATED @ A1** Job No: **CSEA Job No.**

Project Code: **21_115 - CSE - 00 - XX - DR - C - 2304**

Status Code: **S2** Suitability Description: **PRELIMINARY**

Revision: **P04** Project Status: **PRELIMINARY**